

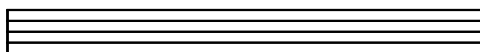
in C

Tune 88

Jeff Lorber

FUNK (16BEAT SHUFFLE)

Musical notation for the first system of 'Tune 88'. It consists of three staves in treble clef with a key signature of one sharp (F#) and a common time signature (C). The first staff contains a melodic line starting with a G7 chord. The second staff has a measure with a C7 chord and a measure with a G7 chord. The third staff contains a sequence of chords: Eb7, E7^{9 13}, F7^{9 13}, F#7^{9 13}, G7^{9 13}, G#7^{9 13}, and G7. The system ends with a double bar line.



ENDING

Musical notation for the ending section of 'Tune 88'. It consists of three staves in treble clef with a key signature of one sharp (F#). The first staff starts at measure 13 with a G7 chord and contains a melodic line. The second staff starts at measure 17 and contains a measure with a G7 chord and a measure with a G7 chord. The word 'STRAIGHT' is written above the second staff with a dashed line. The third staff starts at measure 21 and contains a measure with a Gø/D♭ chord. The system ends with a double bar line.